



Waterbury Regional Chamber
Travel Program

THE LEGENDS OF THE RHINE

THE NETHERLANDS, FRANCE, GERMANY, AND SWITZERLAND!

Luxury Five-Star Cruise from Amsterdam to Basel on board the Deluxe 5 Star Ms. Queen

APRIL 30 – MAY 8, 2027

from **\$5,299**

9 Days, 8 Nights Including Cruise, Meals, Tours and, Airfare from New York

AMADEUS Queen



Join us for a relaxing five-star deluxe culinary journey through the Netherlands, France, Germany, and Switzerland, sailing the legendary Rhine River in effortless style. Discover the many captivating facets of “Father Rhine” as you cruise more than 500 miles of storybook waterways—from Amsterdam, with an overnight stay, through the heart of Germany and France, and onward to Basel. Along the way, visit the historic ports of Cologne, Cochem, Koblenz, Rudesheim, Mannheim, Speyer, and Strasbourg. Experience the picturesque Moselle River Valley, where terraced vineyards cascade along the hillsides, and marvel at the UNESCO-listed Middle Rhine Valley, renowned for its dramatic landscapes, medieval castles, and the legendary Lorelei Rock. This is more than a river cruise—it is an immersive, all-inclusive journey through Europe’s most iconic scenery, rich culinary traditions, and timeless cultural heritage. Extend your journey with two additional nights in the breathtaking Lake Lucerne, Switzerland, where pristine alpine landscapes, elegant lakeside promenades, and storybook Old Town charm create the perfect grand finale to your European escape. Surrounded by snow-capped peaks and crystal-clear waters, Lucerne offers an ideal blend of natural beauty and refined Swiss hospitality. Here you will experience the iconic Mount Pilatus Dragon Ride. Soaring above forests and mountain ridges to panoramic viewpoints overlooking Lake Lucerne and the Swiss Alps. This unforgettable extension delivers the ultimate Switzerland travel experience in one of Europe’s most picturesque destinations.

For more details & reservations contact:

Terry Macary at the Waterbury Regional Chamber

E-mail: tmacary@waterburychamber.com

Phone: 1 (203) 757-0701 ext. 325

CLICK HERE

For the online Brochure and Registration



SCAN ME

PROGRAM INCLUDED FEATURES

- **ROUND TRIP AIR** Air transportation from New York
- **DELUXE ACCOMMODATIONS** 7 nights on board the deluxe Ms. Queen. All staterooms are equipped with private bathrooms, air-conditioning, direct-dial telephone, and color TV with satellite channels
- **SUPERB CUISINE** Superb dining with all meals (20 total) included during your cruise (breakfast, lunch, afternoon tea, dinner, and midnight snacks), coffee, tea, wine, beer, and soft drinks with lunch/dinner
- **WELCOME RECEPTION** Welcome Captain's Cocktail Reception
- **DAILY ENTERTAINMENT** Daily performances on board featuring folklore programs, music performances, lectures, and theme dinners
- **GREAT PORTS OF CALL** We cruise to the fascinating and historic towns and cities of Amsterdam (overnight stay), Cologne, Cochem, Koblenz, Rudesheim, Mannheim, Speyer, Strasbourg, and Basel
- **CRUISE TOUR PROGRAM** For your enjoyment, we have a tour of Amsterdam & an iconic canal cruise, a Cologne walking tour with Kölsch beer tasting, a Cochem walking tour and Reichsburg Castle, a Moselle river wine affair in Cochem, a Koblenz walking tour, a Rudesheim with Music Cabinet Museum tour, a Romantic Heidelberg with castle tour, a Speyer walking tour, and a Strasbourg with canal boat tour
- **JOURNEY OF DISCOVERY** Our onboard program encompasses cultural connections, in-depth learning on the local economy and social systems, and interaction with locals, such as folklore shows, Kölsch beer tasting, insightful and intriguing lectures, regional themed evenings, and culinary demonstrations
- **PROFESSIONAL CRUISE DIRECTOR** Assistance of an experienced cruise director onboard
- **PROFESSIONAL TOUR GUIDE** Assistance of a professional local guide during transfers from the airport/boat/airport
- **BAGGAGE HANDLING** Baggage handling for one piece of checked luggage outside of the airport to the boat and on all included tours
- **FIRST CLASS MOTORCOACHES** Touring by private First-Class air-conditioned motor coach
- **PORT TAXES AND FEES** All ship port taxes and fees

OPTIONAL EXTENSION TO LUCERNE INCLUDED FEATURES:

- **FIRST-CLASS ACCOMMODATIONS** Hotel accommodations for 2 nights
- **MEALS** 2 included meals consisting of 2 breakfasts
- **TOUR PROGRAM** Sightseeing, including local guide and all entrance fees as follows: A city tour of Lucerne and a tour top the top of Mount Pilatus including the Dragon aerial cableway and cogwheel railway
- **PROFESSIONAL TOUR DIRECTOR** Assistance of a professional Tour Director for the entire length of the tour
- **BAGGAGE HANDLING** Baggage handling for one piece of checked luggage outside of the airport



DESTINATION HIGHLIGHTS

Pack and unpack only once • Deluxe accommodations • Gourmet cuisine • Riverboat experience • Hillside castles and storybook villages • Spectacular scenery and lush vineyards • Grand cathedrals, historic cities and medieval towns • Rhine Gorge, a UNESCO World Heritage site • Dutch ingenuity • Picture-perfect German riverside towns • Beautiful city of Amsterdam and canal cruise • Cologne, jewel of the Rhine • World famous Cologne Cathedral • Picturesque town of Cochem • Wine tasting • 2,000-year-old city of Koblenz • Idyllic Rudesheim, winemaking town • Music Cabinet Museum • Romantic city of Heidelberg • Charming Speyer • Sophisticated and multicultural French town of Strasbourg • Vibrant Basel • Stunning Lake Lucerne • Mount Pilatus Dragon aerial cableway and cogwheel railway • Swiss Alps and Switzerland

DISCOVER TIMELESS LUXURY ABOARD THE AMADEUS QUEEN ON THE RHINE RIVER



History, culture, and adventure come alive along the legendary Rhine River, anchored by the elegance of the AMADEUS Queen, a vessel of refined sophistication. Her crown jewel is the striking blue mosaic indoor pool, which transforms into an open-air sky pool as the glass atrium slides away—an unforgettable river cruising experience. Unwind with a handcrafted cocktail in the Amadeus Club, where panoramic views and warm conversation define relaxed luxury. Throughout the ship, spacious signature design and elegant styling set the tone, from private deluxe cabins with ever-changing Rhine vistas to the Panorama Restaurant, where expertly prepared four-course dinners are served in a welcoming atmosphere. This is more than luxury travel, it is elevated living aboard the AMADEUS Queen, where every detail enhances your Rhine River journey.



The Tour Price is from *Cat C4 \$5299 per person, double occupancy. This early bird rate is valid if the program is reserved with a deposit by October 11, 2026. After this date, the price increases to \$200 per person. **Don't wait, this trip will sell out fast.**

Full categories available at the time of print are:

Cat C4* \$5,299 (Window)

Cat B4* \$6,299 (French Balcony)

Cat A2 \$7,199 (French Balcony)

Cat S2* \$7,799 (Balcony)

Cat C2* \$5,599 (Window)

Cat B2 \$6,599 (French Balcony)

Cat A1 \$7,499 (French Balcony)

Cat S1* \$7,999 (Balcony)

Cat C1 \$5,899 (Window)

Cat B1 \$6,899 (French Balcony)

Single supplements *Cat C \$2,399

*Cat B \$2,599 * limited availability

Optional Lake Lucerne, Switzerland, Extension \$999 per person, double occupancy; add \$399 for a single supplement.

Please note Quest Voyager reserves the right to make corrections or adjustments to the travel program, as necessary. To reserve and see more photographs, click the green box or scan the QR code on the front page of this brochure.

Day 1 – Depart the USA Depart the U.S. on your international flight to Amsterdam, the Netherlands. Meals and refreshments are served onboard as you begin your journey to Europe.

Day 2 – Arrive in Amsterdam | Embark on Your River Cruise Arrive in Amsterdam, the vibrant capital of the Netherlands. Famous for its winding canals, Amsterdam's historic center is built on approximately 90 islands connected by more than 400 bridges, creating one of Europe's most distinctive cityscapes. After clearing customs and immigration, you will be met by your Quest Voyager guide. As you travel through the city, enjoy the scenery as Amsterdam's rich history and contemporary charm come to life. Upon arrival to your riverboat, your floating home for the next seven nights, enjoy leisure time to familiarize yourself with the deluxe vessel: stroll along the sun deck, unwind in the spa, visit the onboard hair salon, or relax with a cocktail while meeting fellow travelers. This afternoon, relax and unpack. This evening, celebrate the start of your journey with a Welcome Cocktail, followed by a special Welcome Dinner. With the ship docked overnight, you may wish to explore Amsterdam independently after dinner. (D)

Day 3 – Amsterdam Canal Cruise | Utrecht | Cologne After breakfast, explore Amsterdam from its most iconic perspective during a relaxing canal cruise. Founded as a small fishing village in the late 12th century, Amsterdam rose to global prominence during the Dutch Golden Age, becoming one of the world's most important trading ports. Today, the city boasts one of Europe's largest historic centers, with approximately 7,500 registered historic buildings and a street layout that has remained largely unchanged since the 19th century. During your city tour, pass highlights such as the Maritime Museum, the Jewish Quarter, and the Museum Quarter. As there is no better way to experience the city than from the water, your tour concludes with a scenic canal cruise. Following the tour, travel overland to Utrecht to rejoin the vessel in time for lunch. This afternoon, cruise upstream toward Cologne, enjoying views of the peaceful Dutch countryside along the way. (B, L, D)

Day 4 – Cologne | City Walking Tour After breakfast, enjoy a guided walking tour of Cologne, one of Germany's oldest cities, founded by the Romans over 2,000 years ago. Explore the historic Old Town, where traces of the city's past are visible throughout the Rhine region. Walk through narrow cobblestone streets and lively

squares such as Alter Markt and Heumarkt, gaining insight into daily life in Cologne, past and present. Marvel at the magnificent Cologne Cathedral, completed in 1880, whose twin 515-foot towers make it the city's defining landmark and Germany's most visited monument. Conclude your tour with a glass of traditional Kölsch beer, the signature brew of Cologne and the Rhineland. Enjoy free time this afternoon to explore local shops or relax before returning to the ship for dinner as your cruise continues along the Rhine River. (B, L, D)

Day 5 – Cochem | City Walk & Wine Tasting This morning, enjoy a scenic cruise along the Moselle River, passing steep terraced vineyards and dramatic cliff faces before arriving in Cochem, a charming town nestled in the heart of the Moselle wine valley. After lunch onboard, set out on a guided walking tour through its narrow, winding streets. Visit the impressive Reichsburg Castle, dramatically perched on a rocky hill above the town, offering panoramic views of the Moselle Valley's forests, vineyards, and medieval rooftops. Inside the castle, discover a remarkable collection of Renaissance and Baroque furnishings, once owned by the Ravené family before the castle was transferred to the town in 1978. Continue with a visit to a local winery, where you'll learn about viticulture and cellar management. The Moselle region is renowned for its exceptional wines, particularly Riesling, often called the "queen of white wines," grown on the steep slopes surrounding Cochem. Enjoy tastings and insight into the winemaking process. (B, L, D)

Day 6 – Koblenz | Middle Rhine Valley | Rüdesheim Arrive in Koblenz, ideally situated at the confluence of the Rhine and Moselle Rivers. Join a guided walking tour through the town's romantic streets, passing landmarks such as St. Castor Basilica, Liebfrauenkirche, and the playful Schängel Fountain at the town hall. Visit the Memorial of Emperor Wilhelm at the famous German Corner, where the two rivers meet. See the impressive cable car hovering above the Rhine, built for the 2011 Federal Horticultural Show and now a symbol of modern engineering. After lunch, relax on deck as you cruise through the legendary Upper Middle Rhine Valley, a UNESCO World Heritage Site celebrated for its dramatic riverbanks, vineyards, and hilltop castles. Arriving later in Rüdesheim brings a walking tour of this winegrowing town, followed by a ride on the Winzerexpress to the Siegfried Mechanical Music Cabinet Museum, featuring historic self-playing instruments. (B, L, D)



Day 7 – Mannheim | Heidelberg | Speyer Before breakfast, dock in Mannheim, gateway to nearby Heidelberg, the famed university city on the Neckar River. On your guided tour, explore Heidelberg’s beautifully preserved Baroque Old Town, long admired by poets and artists. Visit Heidelberg Castle, a former royal residence of red sandstone, often considered one of Germany’s most beautiful attractions. Walk through the castle gardens and enjoy sweeping views from the Grand Terrace overlooking the city and river. Continue your tour through the Old Town, crossing Karl-Theodor Bridge and passing the Church of the Holy Spirit and the town hall. This afternoon, arrive in Speyer, known for its cathedral, the final resting place of Roman emperors and German kings. Enjoy a walking tour past the Romanesque Imperial Cathedral, the Old Gate, and the Baroque Church of the Holy Spirit. Visit the medieval Judenhof, one of Germany’s most significant Jewish heritage sites, including the remains of synagogues and a ritual bath (Mikveh). Before returning to the ship, sample a local pretzel. This evening, sail onward to Strasbourg. (B, L, D)

Day 8 – Strasbourg | Canal Boat Tour Arrive in Strasbourg, the dynamic capital of Alsace. Highlights include the magnificent Strasbourg Cathedral, the charming Petite France quarter, and the UNESCO-listed Grande Île, connected to the city by 22 stone bridges. After a short coach ride, enjoy a guided walk through the Old Town, including a visit to the cathedral. Then you experience Strasbourg by canal boat, the best way to appreciate its historic architecture. Cruise past the half-timbered houses of Petite France, some dating back over 500 years, and admire landmarks such as the Ponts Couverts, Palais de Rohan, and the Council of Europe. After lunch onboard, take in views of the romantic Rhine as the ship continues toward Switzerland. (B, L, D)

Day 9 – Basel | Return to USA or Optional Lake Lucerne Extension After breakfast onboard, disembark in Basel, Switzerland. Transfer to the airport for your return flight home or extend your journey with the optional Lake Lucerne extension. (B)



Light tour: There is easy walking throughout the day. Plan to get on and off the coach/boat, with light walking tours, some stairs, and uneven surfaces, through cities and sights such as museums.

Protect Your Travel Investment with Travel Insurance!

For your peace of mind, travel insurance can be purchased either by clicking the link below or after securing your reservation through our booking engine. At Quest Voyager, we highly recommend travel insurance—whether standard coverage or **Cancel for Any Reason (CFAR)**—to safeguard both yourself and your investment.

Click below to explore your options and ensure a worry-free journey: <https://www.travelinsure.com/questvoyager/>

OPTIONAL LAKE LUCERNE EXTENSION

Day 9 – Basel to Lake Lucerne, Switzerland Disembark after breakfast from your deluxe, 5-star vessel in Basel as you depart for Lake Lucerne, traveling through the heart of the Swiss countryside. Along the way, enjoy postcard-perfect scenery of rolling green hills, pristine farmland, and distant alpine silhouettes that define Switzerland’s timeless beauty. Upon arrival, discover the highlights of Lucerne, Switzerland, on a guided walking tour that brings centuries of history and its scenery to life. Stroll across the iconic Chapel Bridge and admire its historic painted panels, explore the charming Old Town with its colorful frescoed façades and cobblestone squares, and pause at the poignant Lion Monument, one of Europe’s most moving memorials. Your guide leads you along the Reuss River to landmarks such as the elegant Jesuit Church. With scenic lake views, and historic architecture, this Lucerne walking tour is the perfect introduction to one of Switzerland’s most beautiful cities. Afterwards, enjoy some free time for a late lunch before checking into your hotel to relax in the Swiss mountain air. The evening is at leisure, perhaps to walk along the beautiful lake promenade on the shores of Lake Lucerne. It is a perfect end to the day, amid scenic views and soaking in the city’s waterfront atmosphere. (B)

Day 10 – Lake Lucerne Experience one of Switzerland’s most breathtaking alpine adventures with an unforgettable journey from Lucerne to Mount Pilatus. After breakfast, depart from Lucerne by coach for a scenic drive to Kriens, where your ascent begins. Board the panoramic gondola and glide effortlessly above lush forests and meadows before continuing on the spectacular “Dragon Ride” aerial cableway to the summit of Mount Pilatus. The Dragon Ride, designed with expansive panoramic windows, offers sweeping 360-degree views over Lake Lucerne and the dramatic Swiss Alpine peaks, an iconic highlight of any trip to Switzerland. At the summit, enjoy free time to explore the panoramic terraces, capture stunning photographs, take a short alpine hike, or savor lunch at the mountain restaurant overlooking the lake and surrounding mountains. On a clear day the vistas stretch across central Switzerland, providing some of the region’s most scenic views. In the afternoon, descend aboard the world’s steepest cogwheel railway to Alpnachstad. This is an engineering marvel and a bucket-list experience in its own right. From there, continue driving along the picturesque shores of Lake Lucerne, returning to your hotel after a truly memorable day immersed in Switzerland’s natural beauty. Enjoy your evening at leisure exploring Lucerne’s charming Old Town, lakeside promenades, and inviting restaurants. (B)

Day 11 – Lucerne to Zürich to the USA After breakfast at your hotel, transfer to Zürich Airport for your return flight home. (B)

(B) - Breakfast, (L) - Lunch, (D) - Dinner.

Hotel/boat accommodation and itinerary are subject to change. Quest Voyager and the cruise line reserve the right to adjust the program as necessary.

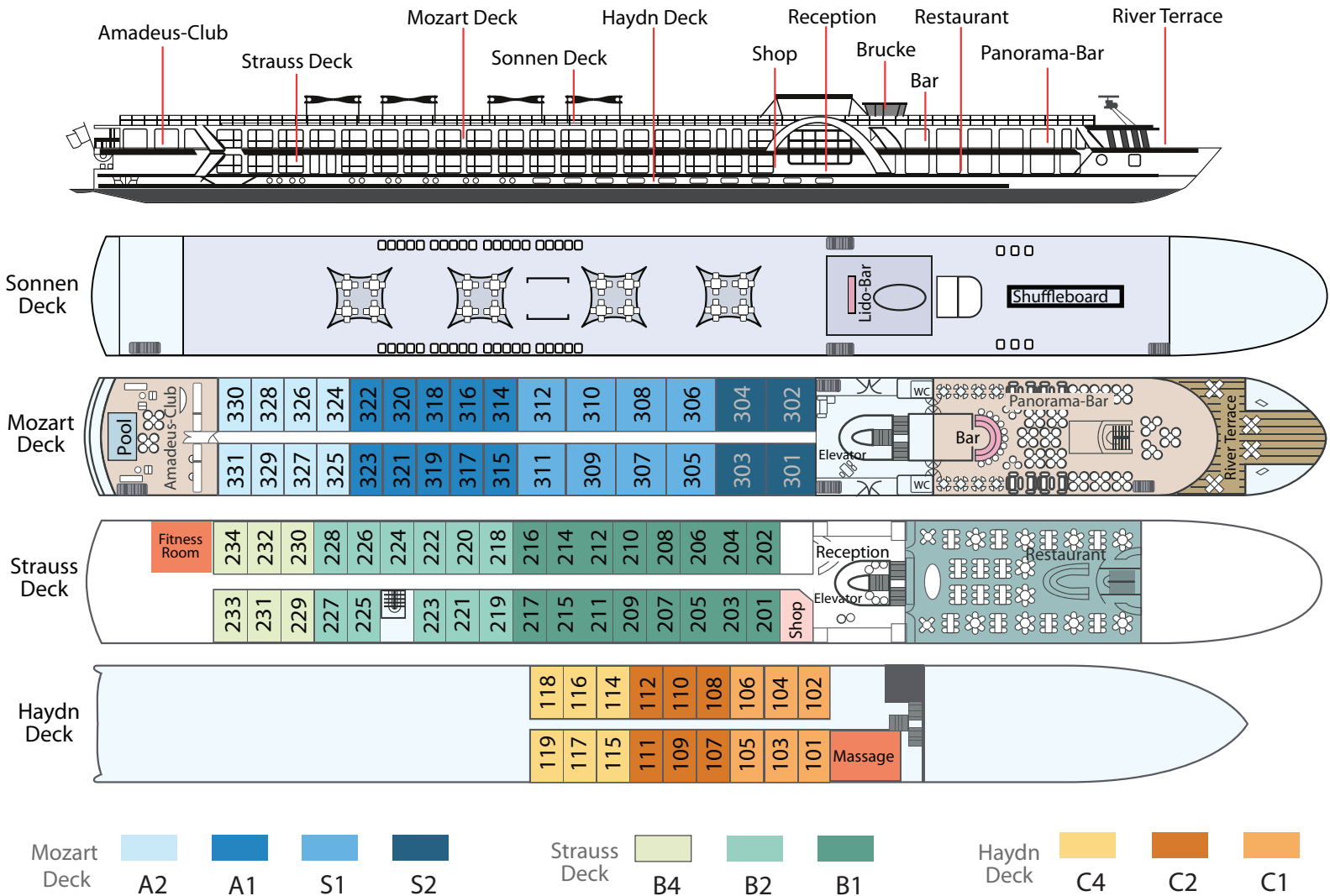
Join Us for a Luxury Culinary Journey through the Netherlands, France, Germany, and Switzerland!

Rooted in Austrian hospitality, exceptional cuisine defines the AMADEUS luxury river cruise experience. Each meal celebrates European heritage and refined taste, from indulgent breakfasts to elegant desserts. Skilled chefs craft every dish using fresh regional ingredients, featuring Bavarian specialties, Parisian pastries, and international favorites. In the evening, enjoy premium European wines from renowned river-valley vineyards. Every course and sip immerses you in Europe’s flavors, culture, and elegance, where luxury travel and fine dining unite in an unforgettable culinary journey.



Join Us for a Luxury Culinary Journey through the Netherlands, France, Germany, and Switzerland!

Rooted in the rich traditions of Austrian hospitality, exceptional cuisine is at the heart of the AMADEUS luxury river cruise experience. Every meal is thoughtfully designed to celebrate European heritage, refined taste, and elevated dining. From indulgent breakfasts to exquisite evening desserts, each plate reflects our commitment to sophistication and culinary excellence. Behind the scenes, our skilled chefs prepare dishes using the freshest regional ingredients, crafting a refined selection that ranges from authentic Bavarian specialties and delicate Parisian pastries to expertly executed international favorites. As evening falls, savor a curated selection of premium European wines, sourced from renowned vineyards along the continent's dramatic river valleys and steep, sun-kissed slopes. Every sip, like every course, is designed to immerse you in the flavors, culture, and elegance of Europe. Experience a journey where luxury travel and fine dining come together for an unforgettable celebration of cuisine, culture, and craftsmanship.



Discover Timeless Luxury Aboard the AMADEUS Queen on the Rhine River

History, culture, and adventure come alive along the legendary Rhine River, and at the heart of this unforgettable journey is the AMADEUS Queen. A vessel that radiates elegance and refined sophistication. Her crown jewel is the stunning blue mosaic indoor pool, which seamlessly transforms into an open-air sky pool as the glass atrium slides away, creating a one-of-a-kind river cruising experience. In the afternoon, unwind with a handcrafted cocktail in the Amadeus Club, where panoramic river views and warm conversation set the tone for relaxed luxury. Throughout the ship, you'll find the signature spacious design and elegant styling that define the AMADEUS fleet. Retreat to the privacy of your private balcony cabin and watch the ever-changing Rhine landscapes drift by, or gather in the Panorama Restaurant to enjoy expertly prepared four-course dinners in a lively, welcoming setting. This is more than luxury travel; it's living at its finest. Discover the difference aboard the AMADEUS Queen, where every moment is designed to elevate your Rhine River cruise experience.



S1 S2

Suite S1/S2 (26 m² / 249.8 sq.ft.) with walk-out exterior balcony

The magnificent suites offer private walk-out balconies and lounge areas—perfect for enjoying your morning coffee or gazing at the starry sky at night.

Each suite includes our AMADEUS Signature Bed (available as a double or twin), a luxurious bathroom with a shower and high-quality Rituals® bathing products, walk-in wardrobe, Espresso machine with complimentary selection of coffee, flat-screen TV, cabin safe, bathrobe and slippers, hair dryer, direct dial telephone, individual climate control, and a minibar for your convenience.

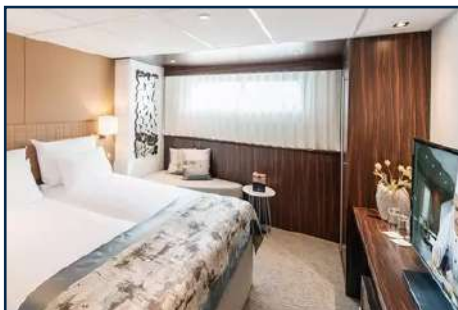


B4 B2 B1 A2 A1

A-1/A-2/B-1/B-2/B4 Cabin (17.5 m² / 188.3 sq.ft.) with drop-down panoramic window

Discover the perfect balance of luxury and tranquility in your personal retreat.

These staterooms feature the AMADEUS Signature Bed (available as a double or twin), a drop-down panoramic window for uninterrupted river views, a spacious bathroom with a walk-in shower and premium Rituals® bathing products, walk-in wardrobe, flat-screen TV, individual climate control, well-stocked minibar, in-room safe, hair dryer, and direct dial telephone — ensuring a comfortable and refined travel experience.



C4 C2 C1

C-1/C-2/C-4 Cabin (16 m² / 172.2 sq.ft.) with panoramic window

Designed with both style and practicality in mind, our Haydn Deck cabins offer a peaceful and well-equipped space for your journey.

Each cabin features a spacious bathroom with a walk-in shower, luxurious Rituals bath products, and a hair dryer, along with a fixed panoramic window that fills the space with natural light. Thoughtful touches like a comfortable double or twin bed, generously-sized wardrobe, secure in-room safe, flat-screen TV, individual climate control, and direct dial telephone ensure a restful and well-equipped stay.

